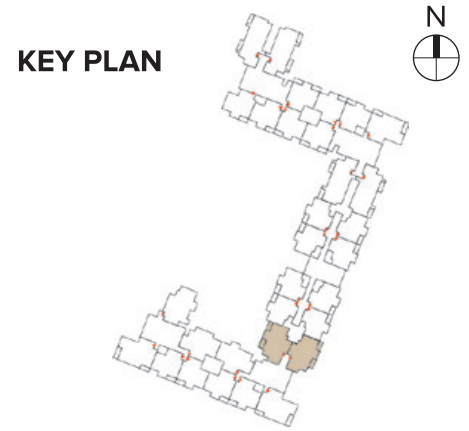


# TYPICAL UNIT PLAN

3-Bedroom Unit - Type B1  
3 Bedrooms + 3 Toilets



**SUPER BUILT-UP AREA**

1610 Sq.ft. / 149.57 Sq.m.

**CARPET AREA**

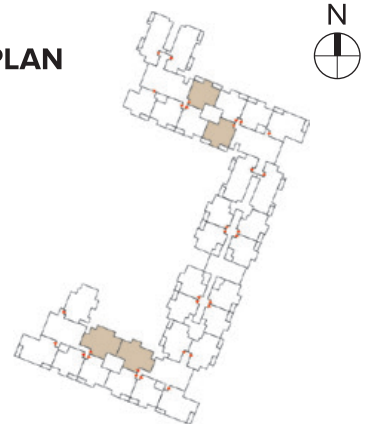
1101 Sq.ft. / 102.3 Sq.m.

The information depicted herein viz., master plans, floor plans, furniture layout, fittings, illustrations, specifications, dimensions, rendered views, colours, amenities and facilities etc., are subject to change without notifications as may be required by the relevant authorities or the developer's architect, and cannot form part of an offer or contract. Whilst every care is taken in providing this information, the Developer cannot be held liable for variations. All illustrations and pictures are artist's impression only. The information are subject to variations, additions, deletions, substitutions and modifications as may be recommended by the company's architect and/or the relevant approving authorities. The Developer is wholly exempt from any liability on account of any claim in this regard. (1 square metre = 10.764 square feet). E & OE.

# TYPICAL UNIT PLAN

3-Bedroom Unit - Type B  
3 Bedrooms + 3 Toilets

KEY PLAN



**SUPER BUILT-UP AREA**

1660 Sq.ft. / 154.22 Sq.m.

**CARPET AREA**

1141 Sq.ft. / 106.03 Sq.m.

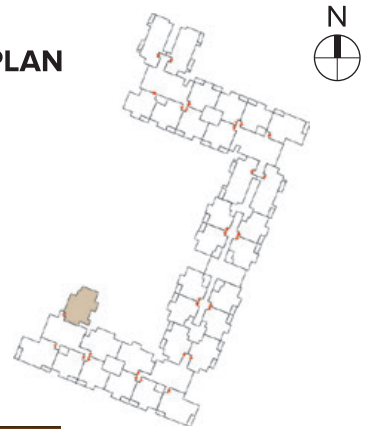
The information depicted herein viz., master plans, floor plans, furniture layout, fittings, illustrations, specifications, designs, dimensions, rendered views, colours, amenities and facilities etc., are subject to change without notifications as may be required by the relevant authorities or the developer's architect, and cannot form part of an offer or contract. Whilst every care is taken in providing this information, the Developer cannot be held liable for variations. All illustrations and pictures are artist's impression only. The information are subject to variations, additions, deletions, substitutions and modifications as may be recommended by the company's architect and/or the relevant approving authorities. The Developer is wholly exempt from any liability on account of any claim in this regard. (1 square metre = 10.764 square feet). E & OE.

# TYPICAL UNIT PLAN

## 3-Bedroom Unit - Type B1 A

### 3 Bedrooms + 3 Toilets

KEY PLAN



**SUPER BUILT-UP AREA**

1710 Sq.ft. / 158.86 Sq.m.

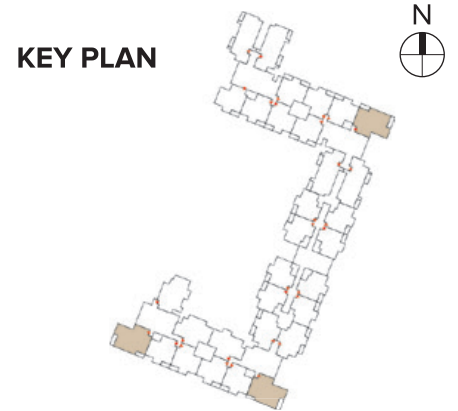
**CARPET AREA**

1170 Sq.ft. / 108.68 Sq.m.

The information depicted herein viz., master plans, floor plans, furniture layout, fittings, illustrations, specifications, designs, dimensions, rendered views, colours, amenities and facilities etc., are subject to change without notifications as may be required by the relevant authorities or the developer's architect, and cannot form part of an offer or contract. Whilst every care is taken in providing this information, the Developer cannot be held liable for variations. All illustrations and pictures are artist's impression only. The information are subject to variations, additions, deletions, substitutions and modifications as may be recommended by the company's architect and/or the relevant approving authorities. The Developer is wholly exempt from any liability on account of any claim in this regard. (1 square metre = 10.764 square feet). E & OE.

# TYPICAL UNIT PLAN

3-Bedroom Unit - Type B2  
3 Bedrooms + 3 Toilets

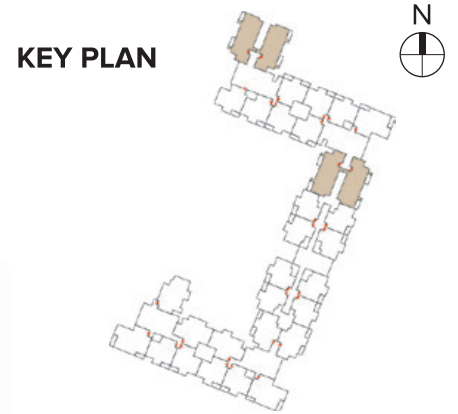


SUPER BUILT-UP AREA	CARPET AREA
1760 Sq.ft. / 163.51 Sq.m.	1193 Sq.ft. / 110.84 Sq.m.

The information depicted herein viz., master plans, floor plans, furniture layout, fittings, illustrations, specifications, designs, dimensions, rendered views, colours, amenities and facilities etc., are subject to change without notifications as may be required by the relevant authorities or the developer's architect, and cannot form part of an offer or contract. Whilst every care is taken in providing this information, the Developer cannot be held liable for variations. All illustrations and pictures are artist's impression only. The information are subject to variations, additions, deletions, substitutions and modifications as may be recommended by the company's architect and/or the relevant approving authorities. The Developer is wholly exempt from any liability on account of any claim in this regard. (1 square metre = 10.764 square feet). E & OE.

# TYPICAL UNIT PLAN

3-Bedroom Unit - Type C  
3 Bedrooms + 3 Toilets + Servant's Room



SUPER BUILT-UP AREA	CARPET AREA
1880 Sq.ft. / 174.66 Sq.m.	1274 Sq.ft. / 118.33 Sq.m.

The information depicted herein viz., master plans, floor plans, furniture layout, fittings, illustrations, specifications, designs, dimensions, rendered views, colours, amenities and facilities etc., are subject to change without notifications as may be required by the relevant authorities or the developer's architect, and cannot form part of an offer or contract. Whilst every care is taken in providing this information, the Developer cannot be held liable for variations. All illustrations and pictures are artist's impression only. The information are subject to variations, additions, deletions, substitutions and modifications as may be recommended by the company's architect and/or the relevant approving authorities. The Developer is wholly exempt from any liability on account of any claim in this regard. (1 square metre = 10.764 square feet). E & OE.